



Lloydminster, Alberta

SALES OFFICE

Musgrave Agencies Ltd. Royal LePage
Unit A – 3708 50th Avenue | Lloydminster, AB T9V 0V7
office: (780) 875 9159 email: info@musgraveagencies.com



PRICES BY FLOOR PLAN STARTING AT:*

934 sq. ft. \$244,900

1090 sq. ft. \$279,900

* GST included rebate to builder, conditions apply (prices subject to change without notice)

STANDARD FEATURES

- Street frontage units
- Upgraded kitchen package
- All appliances include:
 - Fridge
 - Stove
 - Dishwasher
 - Microwave
 - Washer
 - Dryer
- Covered front veranda
- Rear patio
- Privacy fence
- Perimeter fence
- Completed landscaping
- Paved parking
- Two designated parking spaces per unit
- Architecturally upgraded design
- Five year New Home Warranty
- One year builder warranty

Condos from \$244,900s
Upgraded Homes at an Entry Level Price

GDI **GLENCOE**
DEVELOPMENTS INC.

STANDARD FINISHES

- *Tigers Eye* quartz countertops & backsplash
- Stainless steel kitchen appliances
- Molasses maple cabinets
- Under-cabinet lighting
- *Rimrock Pear* hardwood
- *Brownstone* rectangular tiles, 12" x 24"
- *Crushed Stone* carpet
- Colonial baseboards & casings
- Flat crown molding
- Upgraded mirrors and hardwood
- Benjamin Moore *Off White* series
- Codel front door system

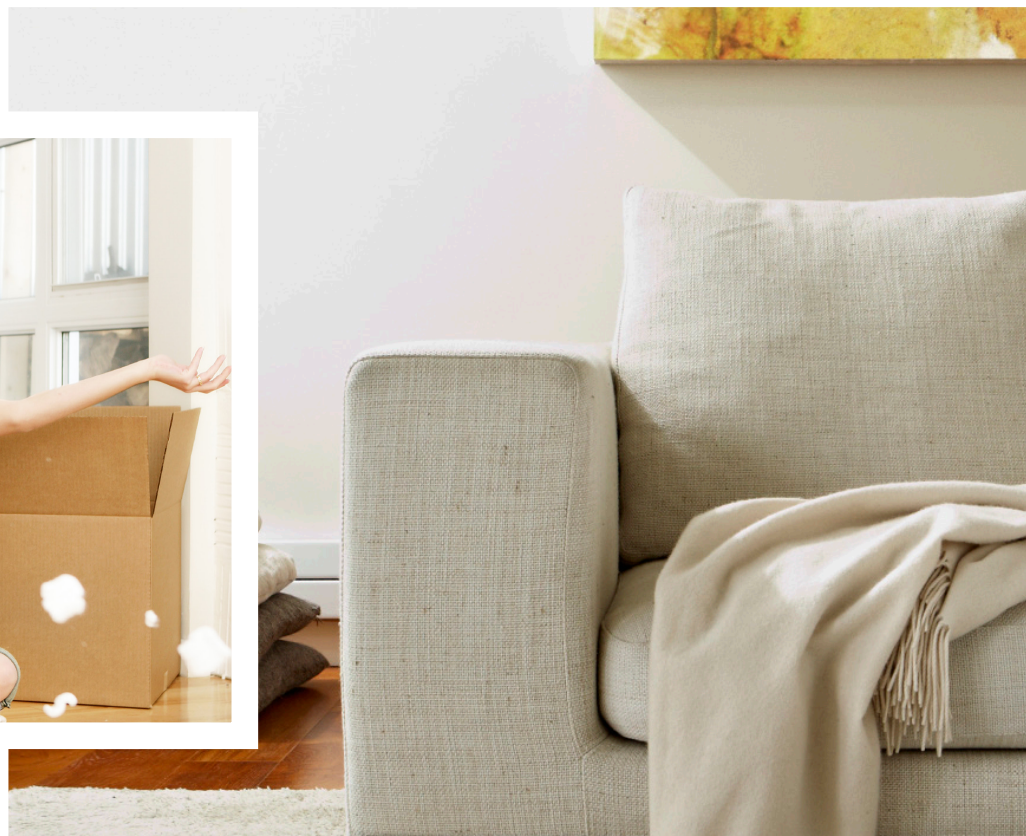
*Sophisticated prairie living,
easy urban charm*

GDI **GLENCOE**
DEVELOPMENTS INC.

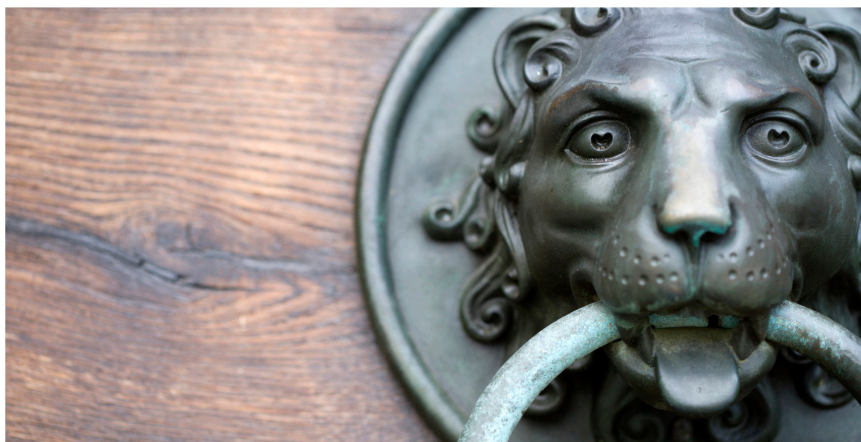
www.glencoe developments.ca

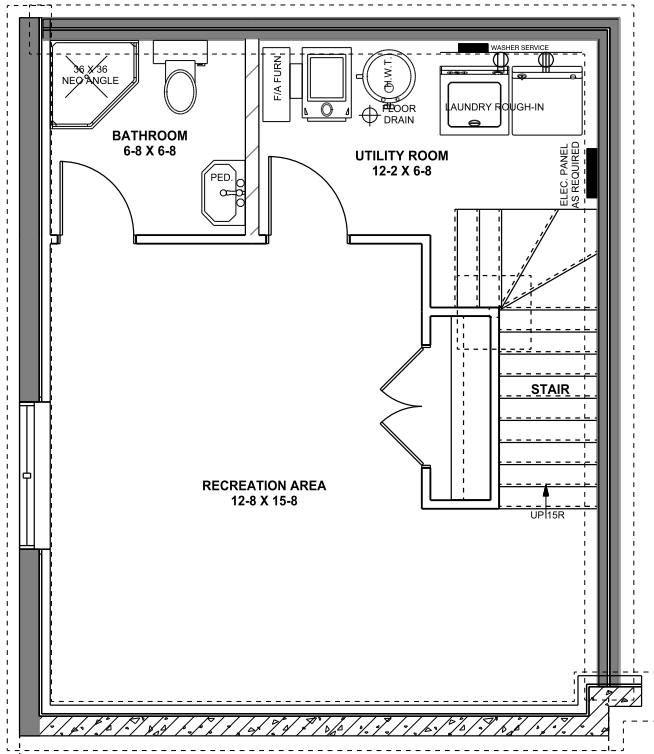


Visit our blog
for updates
and FREE
home tips.

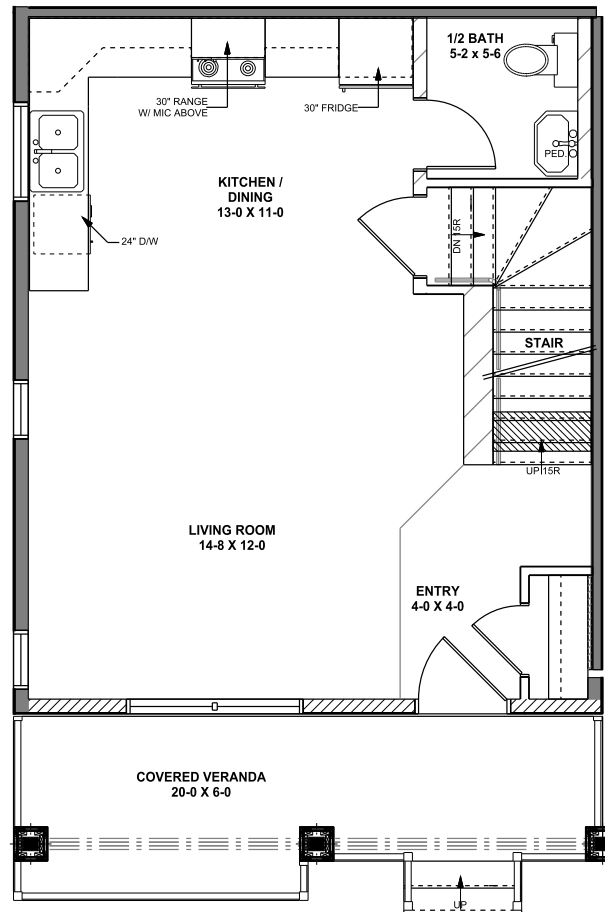


Crafting *QUALITY*,
AFFORDABLE
condos & townhouses for new homebuyers
in *COZY* prairie
communities.

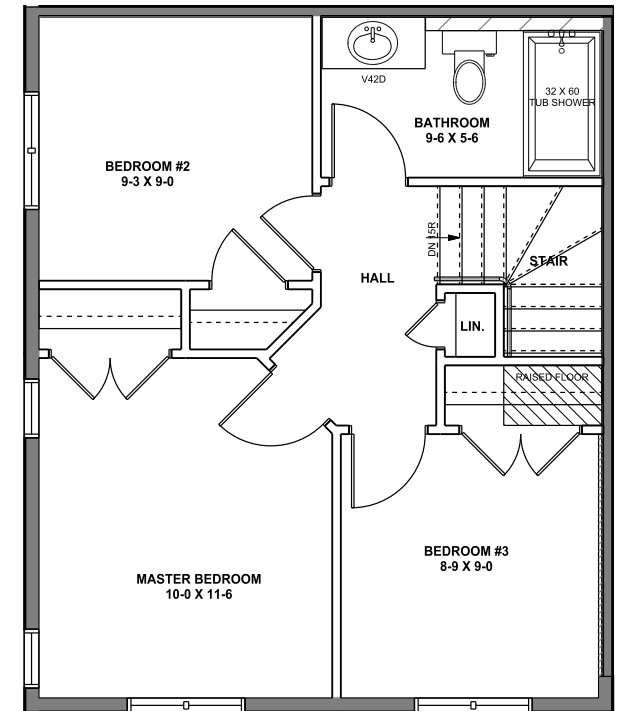




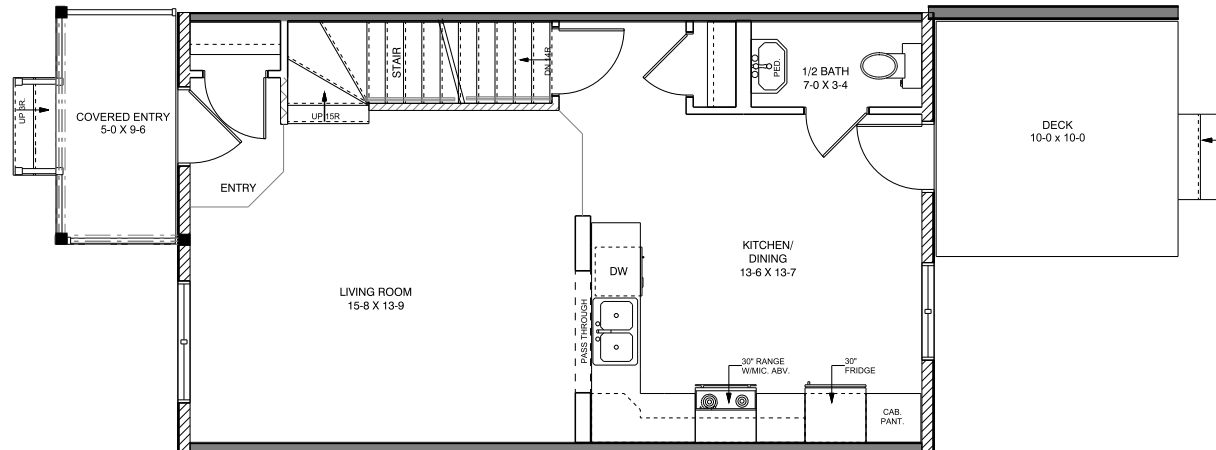
Buildings A-E | 308 sq. ft. | Optional basement plan



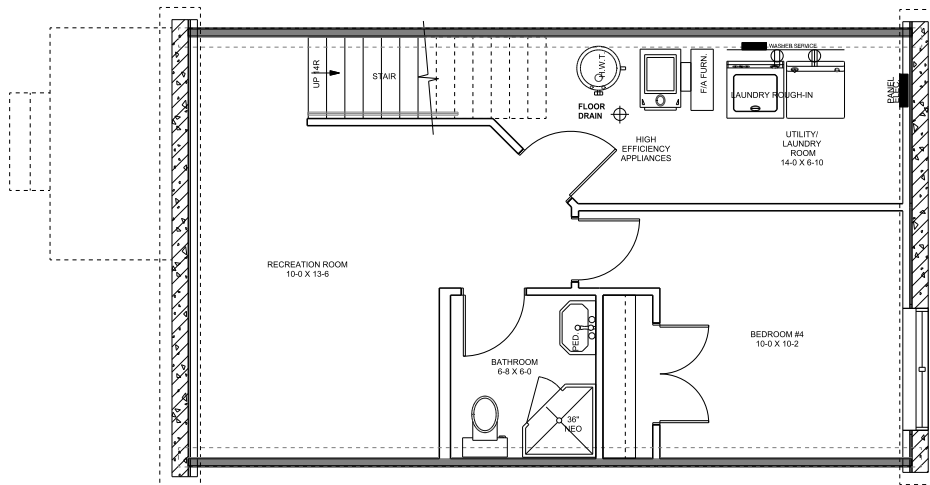
Buildings A-E | 480 sq. ft. | Main floor plan



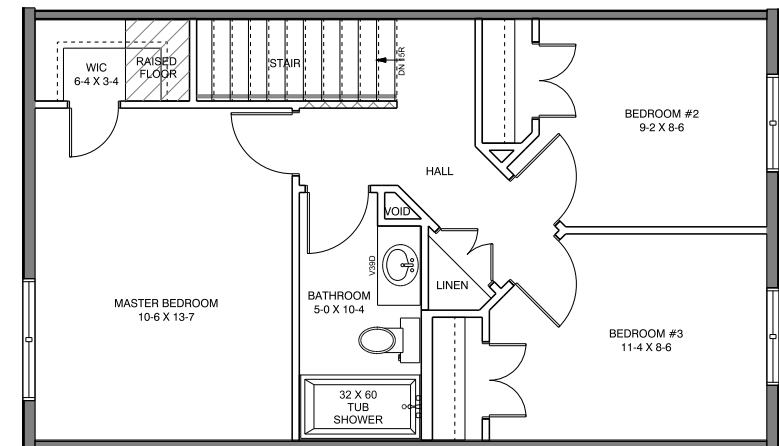
Buildings A-E | 454 sq. ft. | 2nd storey plan



Buildings A-E | 558 sq. ft. | Main floor plan



Buildings A-E | 378 sq. ft. | Optional basement plan



Buildings A-E | 532 sq. ft. | 2nd storey plan